

# Cosmetology Practical Exam

## **Cosmetology Practical Exam Supply List**

### ***Mannequins***

You may bring a minimum of 4 mannequin heads

Live models are not permitted

It is the student's responsibility to appear at the practical examination with mannequin heads

**\*\*We have extra mannequin stands in testing area\*\***

#### Phase 1 – SET AND COMB OUT (20 mins)

- Mannequin – set and dried
- Comb out brush
- Comb (bring extras)
- Lift

#### Phase 2 – WET WORK (10 mins for finger-waves / 30 mins for remainder of head)

- Mannequin – wet, gelled, and in plastic bag
- Wave comb (bring extras)
- Dry-fast setting gel
- Rollers (4) – YELLOW – 1 inch in diameter
- Clips for pin curls
- Roller clips

#### Phase 3 –CHEMICAL EXAMINATION (50 mins)

- Mannequin
- WHITE RODS ONLY
- End papers
- Comb (bring extras)
- Cholesterol
- Foil
- Water spray bottle
- Bleach application brush and bowl

#### PHASE 4 – HAIRCUT (40 mins)

- Mannequin – medium to short hair **\*\*NO LONGER THAN 6 INCHES\*\***
- 2 Towels
- 1 Trash bag
- Dust pan and broom
- Hair cutting cape
- Shears
- Comb (bring extras)
- Duckbill clips or large clips
- Water spray bottle
- Newspaper for sanitation

# SET AND COMB OUT- 20 MINS.

## SET

---

- SET MUST INCLUDE ROLLERS AND PINCURLS; PINCURLS MUST BE CLIPPED.
- MUST NOT HAVE HAIR FALLING OFF ROLLERS; MANNEQUIN SHOULD NOT BE WET.
- STUDENTS ARE NOT TIMED FOR GRADING OF SET.
- STUDENTS ARE ALLOWED 20 MINS FOR COMB OUT.



## COMB OUT

---



- SET MUST INCLUDE ROLLERS AND PIN CURLS.
- PIN CURLS MUST BE CLIPPED.
- COMB OUT MUST HAVE FORM AND BALANCE; BACK COMBING MUST BE SMOOTH.



# WET WORK-30 MINS.

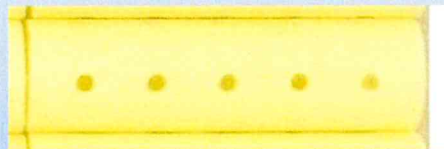
## FINGER WAVES



- FINGERWAVES MUST BE HORIZONTAL
- ENTIRE HEAD MUST BE COMPLETED



- ⇐ ROLLER#1 ON BASE
- ⇐ ROLLER#2 HALF OFF BASE
- ⇐ ROLLER#3 COMPLETELY OFF BASE
- ⇐ ROLLER#4 IN A SHAPING
  - Comb hair in to a shaping
  - Place roller at the beginning of the hair and roll into the shaping in an **UPWARD DIRECTION.**
  - **ONLY YELLOW ROLLERS-ROLLERS MUST BE NO LONGER THAN 2 ½ INCHES IN LENGTH AND 1 INCH IN DIAMETER**

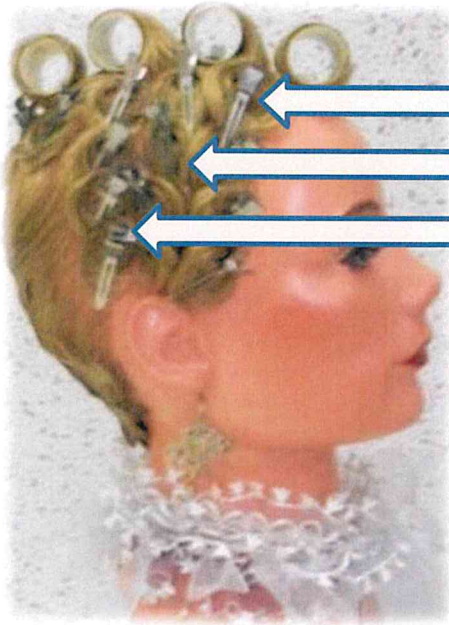


### PINCURL CONSTRUCTION

- UNDER THE ROLLER IN A SHAPING, CREATE A SECTION ABOUT THE SIZE OF THE ROLLER AS SHOWN.
- SUB-DIVIDE THE SECTION INTO 3 EQUAL SECTIONS FOR THE PIN CURLS.
- CREATE 3 PIN CURLS AS SHOWN, **ON BASE, HALF OFF BASE, AND OFF BASE.**
- COMB THE REMAINDER OF THE HAIR INTO SHAPINGS.
- AT THE OPEN END OF ONE OF THE SHAPINGS CONSTRUCT A PIN CURL. (THIS IS YOUR PIN CURL IN A SHAPING AS REQUIRED)



## BRUSH WAVES



FIRST ROW- CLOCKWISE PIN CURL/ INDENTATION

SECOND ROW- COUNTER CLOCKWISE PIN CURL/VOLUME

THIRD ROW- CLOCKWISE PIN CURL/INDENTATION

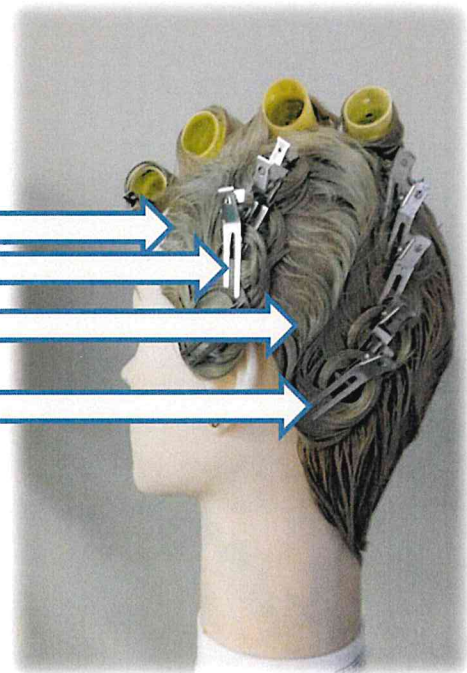
***MUST BE 3 ROWS OF ALTERNATING PIN CURLS***

## SKIP WAVES

SHAPING  
COUNTER CLOCKWISE PIN CURLS  
SHAPING  
COUNTER CLOCKWISE PIN CURLS

***\*\*THE SKIP WAVE MUST BE DIAGONAL AND INCLUDE 2 SHAPINGS  
AND 2 ROWS OF PIN CURLS\*\****

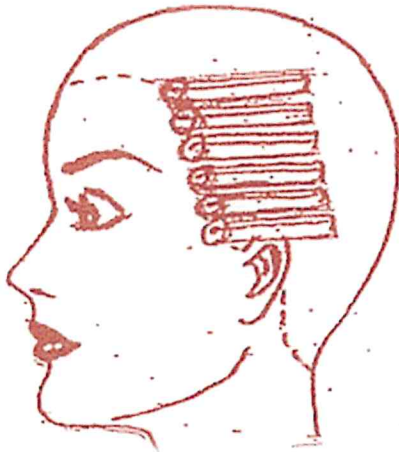
*THE SKIP WAVE IS A COMBINATION OF FINGERWAVES AND PIN CURL PATTERNS. THE PIN CURLS BEING PLACED IN AN ALTERNATE FINGERWAVE FORMATION IS A TECHNIQUE THAT CREATES WIDE, SMOOTH, AND FLOWING VERTICAL WAVES.*



# CHEMICALS- 50 mins.

## PERMANENT WAVE

---

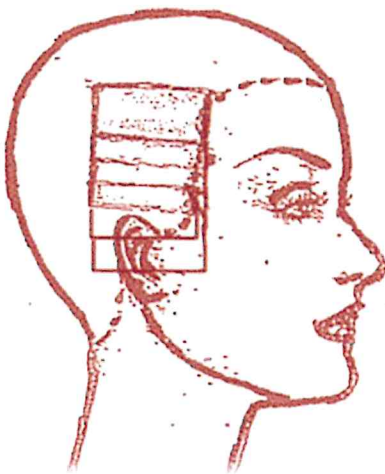


- ***Must be completed on FRONT LEFT PANEL***
- MINIMUM OF 6 RODS
- WRAPPING PROCEDURE/RUBBER BANDS/ LONG WHITE RODS
- USE OF \*DOUBLE END PAPERS IN RELATION TO STRAND OF HAIR.
- POSITION OF ROD ON SCALP IN RELATION TO SIZE OF STRAND AND SIZE OF ROD. ALL RODS ARE TO BE ROLLED HALF OFF BASE
- CORRECT SECTIONING ACCORDING TO ROD SIZE.
- SECTION MUST BE COMPLETED.

***NOTE: HALF OFF BASE PLACEMENT REFERS TO WRAPPING THE HAIR AT A 90 DEGREE ANGLE OR STRAIGHT OUT FROM THE CENTER OF THE SECTION. HALF OFF BASE PLACEMENT MINIMIZES STRESS AND TENSION ON THE HAIR.***

## FOIL HI-LITE

---



- ***Must be completed on FRONT RIGHT PANEL***
- PLACEMENT OF FOIL CLOSE TO SCALP (6 MINIMUM)
- STRANDS MUST BE WEAVED AND COMPLETELY SATURATED WITH PRODUCT.
- SECTION MUST BE COMPLETED.



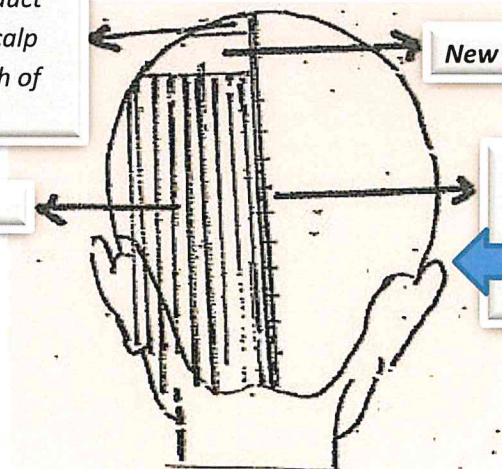
## RELAXER RETOUCH

## VIRGIN BLEACH



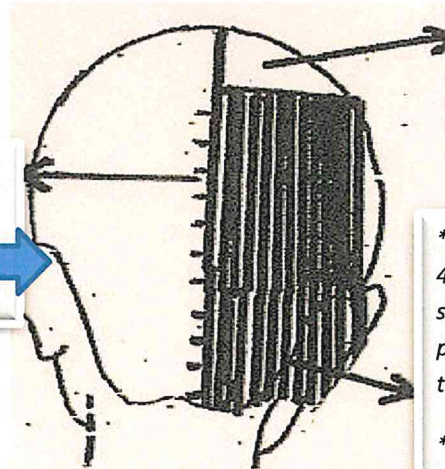
Apply the product  
 $\frac{1}{4}$  to  $\frac{1}{2}$  from scalp  
down to  $\frac{1}{2}$  inch of  
hair strand

Hair strand



**BACK LEFT PANEL**

$\frac{1}{4}$  inch sub-  
sections



**BACK RIGHT PANEL**

**NEW GROWTH**

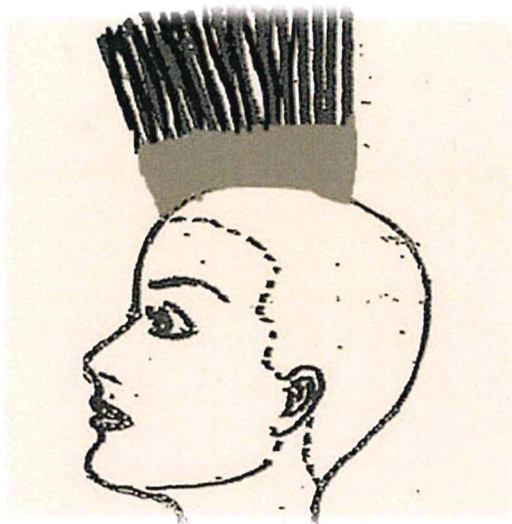
Apply product  
 $\frac{1}{2}$  inch from  
scalp.

\*If the hair is  
4 inches or  
shorter, apply  
product down to  
the ends.

\*If the hair is  
longer than  
4 inches, apply  
product down to  
about 1 inch  
from the ends.



## HAIR COLOR RETOUCH

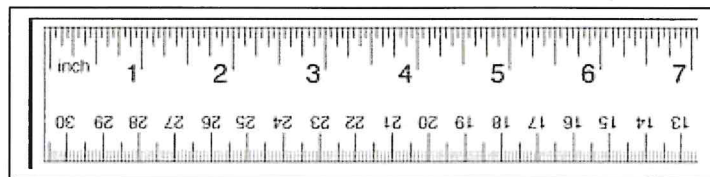
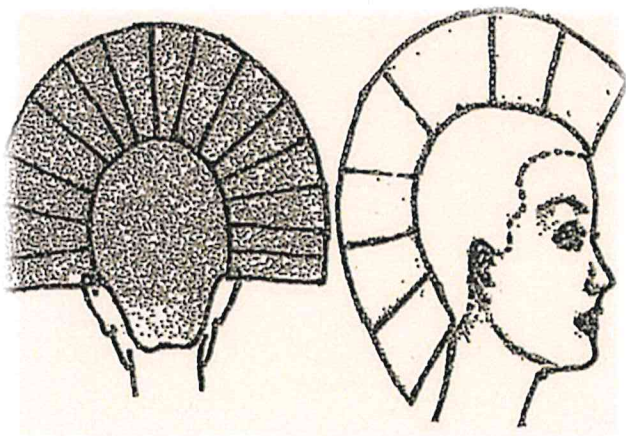


- ¼ INCH SUB-SECTIONS
- AT THE BEGINNING OF THE SCALP, APPLY THE COLOR **ON THE SCALP** AND UP TO ½ INCH OF THE HAIR STRAND.
- PRODUCT MUST NOT EXCEED THE ½ INCH RE-GROWTH AREA.

**NOTE: MANNEQUIN HEADS THAT HAVE BEEN PRE-SECTIONED INDICATING SECTION BY VARIOUS COLORS OR NOTCHES ARE NOT ALLOWED.**

**ABSOLUTELY NO PRE-SECTIONED MANNEQUINS AND HAIR CANNOT BE FLAT IRONED.**

## HAIRCUT 40 MINS.



- Mannequins should be no longer than the length of the comb. (7 inches)
- Mark your comb so you can easily see the inches.
- You must cut at least an inch off the hair.
- You cannot cut the mannequin shorter than 3 inches.
- Use your comb to indicate where the 90 degrees are as you cut.
- Hair must be the same length throughout the haircut.
- Your completed haircut cannot be longer than 7 inches
- Haircut must be completed in 40 minutes.