

SET AND COMB OUT- 20 MINS.

SET

- SET MUST INCLUDE ROLLERS AND PINCURLS; PINCURLS MUST BE CLIPPED.
- MUST NOT HAVE HAIR FALLING OFF ROLLERS; MANNEQUIN SHOULD NOT BE WET.
- STUDENTS ARE NOT TIMED FOR GRADING OF SET.
- STUDENTS ARE ALLOWED 20 MINS FOR COMB OUT.



COMB OUT



- SET MUST INCLUDE ROLLERS AND PIN CURLS.
- PIN CURLS MUST BE CLIPPED.
- COMB OUT MUST HAVE FORM AND BALANCE; BACK COMBING MUST BE SMOOTH.

WET WORK-30 MINS.

FINGER WAVES



- FINGERWAVES MUST BE HORIZONTAL
- ENTIRE HEAD MUST BE COMPLETED



- ⇐ ROLLER#1 ON BASE
- ⇐ ROLLER#2 HALF OFF BASE
- ⇐ ROLLER#3 COMPLETELY OFF BASE
- ⇐ ROLLER#4 IN A SHAPING
 - Comb hair in to a shaping
 - Place roller at the beginning of the hair and roll into the shaping in an **UPWARD DIRECTION.**
 - ***ONLY YELLOW ROLLERS-ROLLERS MUST BE NO LONGER THAN 2 ½ INCHES IN LENGTH AND 1 INCH IN DIAMETER***



PINCURL CONSTRUCTION

- UNDER THE ROLLER IN A SHAPING, CREATE A SECTION ABOUT THE SIZE OF THE ROLLER AS SHOWN.
- SUB-DIVIDE THE SECTION INTO 3 EQUAL SECTIONS FOR THE PIN CURLS.
- CREATE 3 PIN CURLS AS SHOWN, **ON BASE, HALF OFF BASE, AND OFF BASE.**
- COMB THE REMAINDER OF THE HAIR INTO SHAPINGS.
- AT THE OPEN END OF ONE OF THE SHAPINGS CONSTRUCT A PIN CURL. (THIS IS YOUR PIN CURL IN A SHAPING AS REQUIRED)

BRUSH WAVES



FIRST ROW- CLOCKWISE PIN CURL/ INDENTATION

SECOND ROW- COUNTER CLOCKWISE PIN CURL/VOLUME

THIRD ROW- CLOCKWISE PIN CURL/INDENTATION

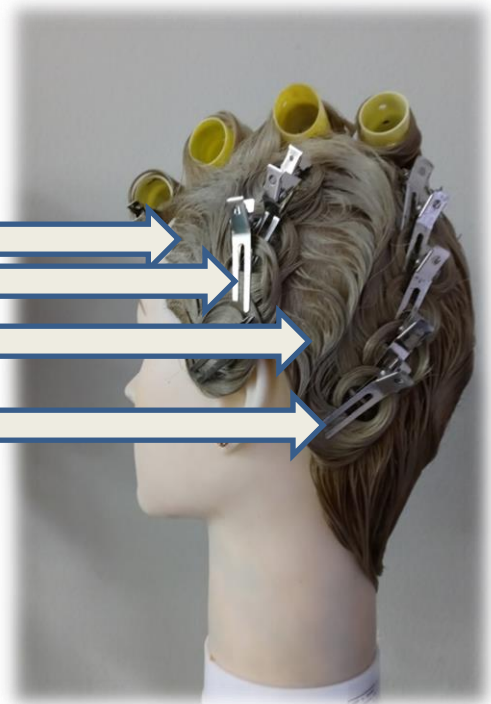
MUST BE 3 ROWS OF ALTERNATING PIN CURLS

SKIP WAVES

SHAPING
COUNTER CLOCKWISE PIN CURLS
SHAPING
COUNTER CLOCKWISE PIN CURLS

*****THE SKIP WAVE MUST BE DIAGONAL AND INCLUDE 2 SHAPINGS
AND 2 ROWS OF PIN CURLS*****

*THE SKIP WAVE IS A COMBINATION OF FINGERWAVES AND PIN CURL
PATTERNS. THE PIN CURLS BEING PLACED IN AN ALTERNATE
FINGERWAVE FORMATION IS A TECHNIQUE THAT CREATES WIDE,
SMOOTH, AND FLOWING VERTICAL WAVES.*



CHEMICALS- 50 mins.

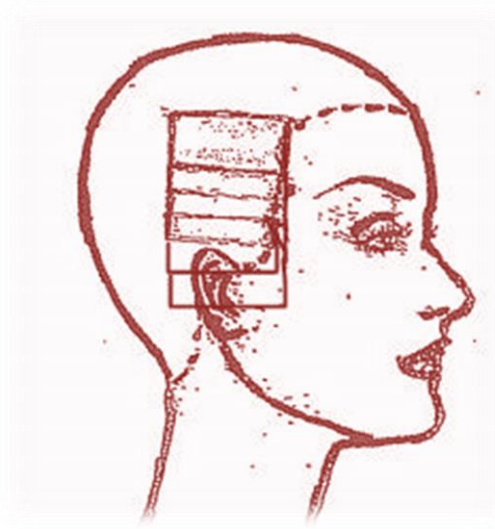
PERMANENT WAVE



- ***Must be completed on FRONT LEFT PANEL***
- MINIMUM OF 6 RODS
- WRAPPING PROCEDURE/RUBBER BANDS/ LONG WHITE RODS
- USE OF *DOUBLE END PAPERS IN RELATION TO STRAND OF HAIR.
- POSITION OF ROD ON SCALP IN RELATION TO SIZE OF STRAND AND SIZE OF ROD. ALL RODS ARE TO BE ROLLED HALF OFF BASE
- CORRECT SECTIONING ACCORDING TO ROD SIZE.
- SECTION MUST BE COMPLETED.

NOTE: HALF OFF BASE PLACEMENT REFERS TO WRAPPING THE HAIR AT A 90 DEGREE ANGLE OR STRAIGHT OUT FROM THE CENTER OF THE SECTION. HALF OFF BASE PLACEMENT MINIMIZES STRESS AND TENSION ON THE HAIR.

FOIL HI-LITE



- ***Must be completed on FRONT RIGHT PANEL***
- PLACEMENT OF FOIL CLOSE TO SCALP (6 MINIMUM)
- STRANDS MUST BE WEAVED AND COMPLETELY SATURATED WITH PRODUCT.
- SECTION MUST BE COMPLETED.



Apply the product
¼ to ½ from scalp
down to ½ inch of
hair strand

New Growth

Hair strand

¼ inch sub-
sections

NEW GROWTH

Apply product
½ inch from
scalp.

*If the hair is
4 inches or
shorter, apply
product down to
the ends.

*If the hair is
longer than
4 inches, apply
product down to
about 1 inch
from the ends.

BACK LEFT PANEL

BACK RIGHT PANEL

HAIR COLOR RETOUCH

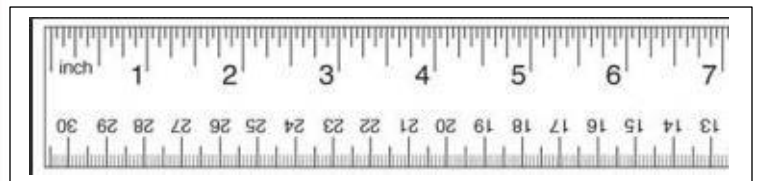
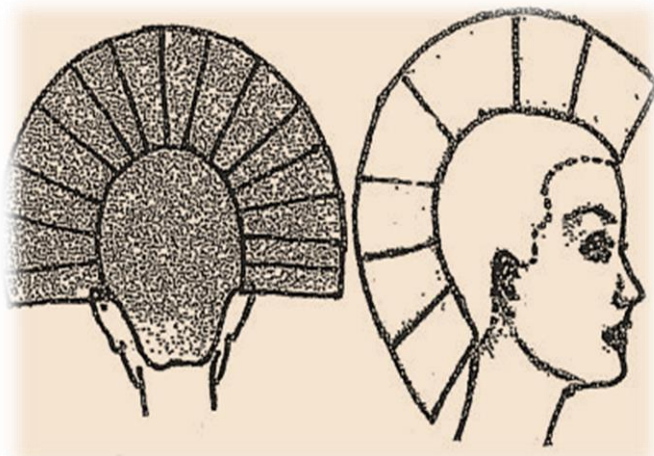


- ¼ INCH SUB-SECTIONS
- AT THE BEGINNING OF THE SCALP, APPLY THE COLOR **ON THE SCALP** AND UP TO ½ INCH OF THE HAIR STRAND.
- PRODUCT MUST NOT EXCEED THE ½ INCH RE-GROWTH AREA.

NOTE: MANNEQUIN HEADS THAT HAVE BEEN PRE-SECTIONED INDICATING SECTION BY VARIOUS COLORS OR NOTCHES ARE NOT ALLOWED.

ABSOLUTELY NO PRE-SECTIONED MANNEQUINS AND HAIR CANNOT BE FLAT IRONED.

HAIRCUT 40 MINS.



- Mannequins should be no longer than the length of the comb. (7 inches)
- Mark your comb so you can easily see the inches.
- You must cut at least an inch off the hair.
- You cannot cut the mannequin shorter than 3 inches.
- Use your comb to indicate where the 90 degrees are as you cut.
- Hair must be the same length throughout the haircut.
- Your completed haircut cannot be longer than 7 inches
- Haircut must be completed in 40 minutes.